

Fall 2011

[About the Foundation](#)

[Prospective Students](#)

[Alumni & Friends](#)

[Giving to the Foundation](#)

[Contact Us](#)

SSF Alumni Testimonials

"After coming to SSF I have been able to involve myself in many different leadership roles on and off campus. Since gaining additional motivation I have taken on a second major (media/communication studies), joined the honors program, several honor societies, garnet and gold scholars, held officer positions, and became an SSF ambassador"

- Troy, Current Resident

"If it wasn't for SSF and Pilot House, I would never have been able to go to college! I believe in education plus hard work, and helping promising students who need financial help reach their potential."

- Marie, SSF Alumna

"Living at SSF taught me how to deal with different personalities which still helps me today. I learned that sometimes you have to do a job you don't want to do because people are counting on you to do it."

- Sheena, SSF Alumna

About SSF

Southern Scholarship Foundation proudly serves students attending four major universities in Florida: Florida A&M University, Florida Gulf Coast University, Florida State University, and the University of Florida. We also serve students attending Tallahassee Community College and Santa Fe Community College.

The average cost for room and board for a typical college student in Florida is approximately \$10,000. With SSF, the average cost to the student is approximately \$950 per semester.

The SSF program's cost to the student is pooled to cover food and utilities for the house, thus reducing each student's expenses by approximately \$8,100 per year. As long as a student continues to demonstrate significant financial need, maintain the required GPA, abide by the house rules (observing quiet study hours, no smoking, no alcohol, no drugs and no co-ed visitation after hours) and live cooperatively within the house, the scholarship is renewable, resulting in approximately \$32,400 in savings during the typical four years of college.

Stay Connected to SSF:

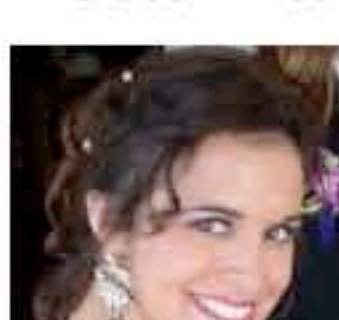


Quarterly 'State of the Foundation' Report

What a great year 2011 has been for the Southern Scholarship Foundation! Here is our third quarter "State of the Foundation" update as we continue our momentum through an exciting and productive fall. (Just click on the image to view the video.)



The Voice of a Student: Leeanna Mantica



Leeanna Mantica was an undergraduate student at the Gresham-Kite-Pilot House at Florida Gulf Coast University. When she was accepted into graduate school for Art Therapy at FSU, she chose to live in another SSF scholarship house. As a resident of Stone House, Leeanna is once again living in a place she calls home.

She, like many of our students, has come to embrace the sense of community that exists here at SSF.

In a card recently received by SSF, Leeanna expressed her appreciation for the opportunity she has been given by SSF. "I am eternally grateful for this scholarship and all that it has provided for me" she writes. "I am NOT poor, I am NOT helpless. I am rich in knowledge, I am abundantly wealthy in friends, I am overflowing with lessons learned, and I also have to say that my stocks are strong in wisdom." Leeanna continues to explain that SSF has given her the tools to take what is already inside of her and help it grow and flourish.

What struck the staff at SSF the most was her passion for the community that has been built here at SSF, dating back to the first house opened by Dr. Mode Stone in 1955. When reaching out to recruits or members of the community, we always speak about the intangible benefits of living at SSF, but Leeanna managed to say it best: "Only at SSF - in this elite, gifted, rich, strong and diverse community is knowledge given such an opportunity to thrive. I believe I have finally understood your motto here: 'Education for Life!'"



HAWKSLEY PRESIDENTIAL SCHOLARSHIPS AWARDED



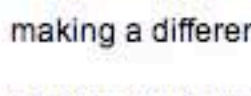
Congratulations to Jesse Sherman from University of Florida and Cammia Dawson from Florida State University for being awarded the prestigious Hawksley Presidential Scholarship for the 2011-2012 Academic Year.

Thanks to the generosity of the late George W. Hawksley, SSF was not only able to build two scholarship houses that now bear his name, but also establish an endowment to provide annual scholarships to two students each year.



This year the competition for these scholarships, which pay for Fall and Spring semester house bills, was unbelievable! SSF has an incredible number of students who have gone above and beyond and have become active participants in their communities. Whether it is volunteering at local schools, mentoring students in the neighborhood or helping out in the SSF office, our students are out there making a difference!

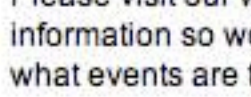
Eligible students include those who are entering their graduation year, have lived at SSF at least two semesters, have a 3.5 GPA and demonstrate an active involvement in SSF and their community.



ATTENTION ALUMNI AND FRIENDS! STAY CONNECTED: UPDATE YOUR INFORMATION

SSF continues to be successful in recruiting the best and the brightest students with financial need, and helping them achieve their dream of a college degree because of the participation of its alumni and friends. By staying connected and remaining an active participant in the organization, you are helping to ensure future generations of deserving students are getting the same opportunity our alumni did.

Please visit our website [HERE](#) to provide us with updated information so we can keep you informed on what's new with SSF, what events are taking place, and how you can help.



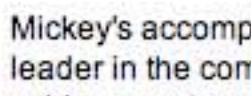
SSF PRESIDENT/CEO RECOGNIZED AS A 2011 LEADER OF THE YEAR FINALIST

On September 15, 2011, Mickey S. Moore was honored as a finalist for the 2011 Leader of the Year award at the 2011 Distinguished Leadership Awards. The Distinguished Leadership Awards is an annual event hosted by Leadership Tallahassee to honor and recognize the accomplishments of key leaders in the city of Tallahassee. Honorees are saluted as the best in business, professional and community leadership.



Mickey's accomplishments, both as President/CEO of SSF and leader in the community, have truly set him apart. Some of the achievements recognized by Leadership Tallahassee's panel of judges include: raising money for the Florida Disabled Outdoor Association through his participation in the Boston Marathon, his volunteer work with the Rotary Youth Camp for kids with disabilities, his years of participation in the Big Brothers Big Sisters program, his leadership role with Capital City Kiwanis Club, and of course his exemplary work as the head of SSF.

Another brilliant example of an SSF alumnus making a difference!



FALL 2011 HAPPENINGS

FSU Home Football Game Parking - Visit SSF and park in the closest non-booster parking to Doak Campbell Stadium. Only \$25 for game-day parking at SSF.

Homecoming Events: Going back to your alma matter for homecoming? Take a stroll down memory lane and stop by your old house to say hi to some of our students.

UF Homecoming - November 5 - Join our current residents for a homecoming BBQ at the SSF houses

FSU Homecoming - November 12 - Park at SSF for the game and spend some time on the hill